

Data collection of Social Report in fiscal year 2008

To Our Customers

- ☒ Incidence of Recalls and Remedial Measures by Hino Motors in Japan

To Our Employees

- ☒ Number of employees
- ☒ Frequency of Temporary Absences Due to Accidents by Industry
- ☒ Participants in Mental Health Care Study Sessions Held for Managers
- ☒ Results of Surveys on Employee Morale

■ Incidence of Recalls and Remedial Measures by Hino Motors in Japan

Details	FY2006	FY2007	FY2008
Recalls	13	13	17
Remedial measures ¹	1	2	0
Service campaigns ²	13	13	11

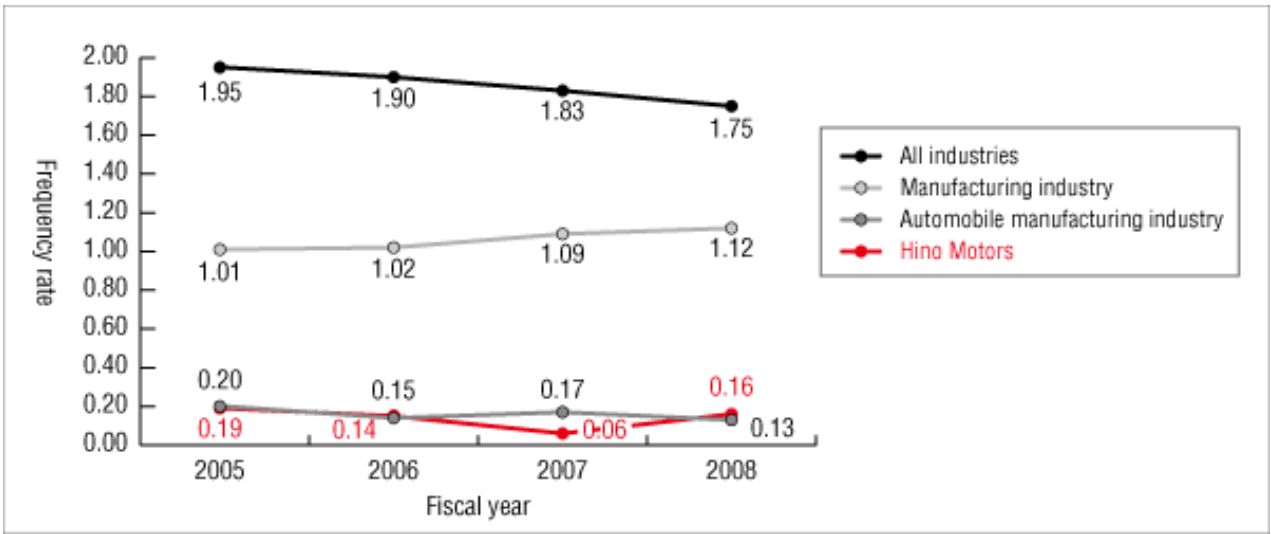
Notes:

1. Remedial measures: Although not constituting a violation of the Road Trucking Vehicle Act of Japan, the remedial measures system requires manufacturers to notify Japan's Ministry of Land, Infrastructure, Transport and Tourism of any issues that are deemed to require attention in terms of either safety or pollution prevention. Vehicle repairs must be completed free of charge.
2. Service campaigns: Pursuant to an official notice issued by the Ministry of Land, Infrastructure, Transport and Tourism of Japan, vehicle manufacturers are obligated to inform product users of any quality issues that do not fall within the scope of recalls and remedial measures. In the event that such notifications are made, manufacturers are further obligated to inform the Ministry of relevant details.

■ Number of employees

	March 31, 2006	March 31, 2007	March 31, 2008	March 31, 2009
Males	8,869	9,338	9,718	9,923
Females	638	642	648	671
Total	9,507	9,980	10,366	10,594

■ Frequency of Temporary Absences Due to Accidents by Industry



■ Participants in Mental Health Care Study Sessions Held for Managers

Business site	FY2006	FY2007	FY2008
Head Office/Hino Plant	79	55	83
Hamura Plant	123	73	65
Nitta Plant	62	21	5
Tamachi Office	14	2	3
Company-wide Total	278	151	156

■ Results of Surveys on Employee Morale

