

CHALLENGE! 4 Challenge of Minimizing and Optimizing Water Usage

TARGET At each site

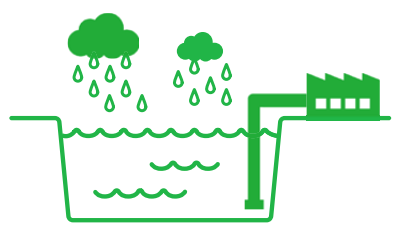
**Minimize the amount of water
Purify wastewater thoroughly**



Today, when about 1.2 billion people, or 20% of the world's population, are unable to use water resources (according to the Ministry of the Environment's website), and it is thought that such shortages will grow even further due to forecasted population increases. Hino Motors will work to reduce water use while promoting the purification of wastewater when it naturally returns from each business site, and work with the local community on water resource issues.

Volume

**Small amounts of water
are used**

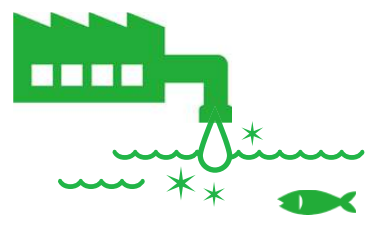


To reduce the amount of factory water that account for much of usage of water resources, The Hino Group will thoroughly promote wastewater collection and reuse. To proactively use rainwater, the Company has set up a storage pit within the premises with the aim of further reducing the amount of new industrial water input. Moreover, to reduce water for daily use, it will thoroughly implement measures (water-saving dishwashers, water-saving packing, etc.) to be used in facilities including cafeterias, toilets, and hand-wash stations.



Quality

**Returned water is
purified**



The Hino Group promotes the thorough purification of wastewater by enhancing the operation of wastewater treatment plants and wastewater purification facilities at each site based on strict standards. At the same time, the Company will strive to prevent wastewater quality deterioration by rigorously reducing the risk of liquid leakage.



Initiatives for Conserving Water at Factories

Small amounts of water purified

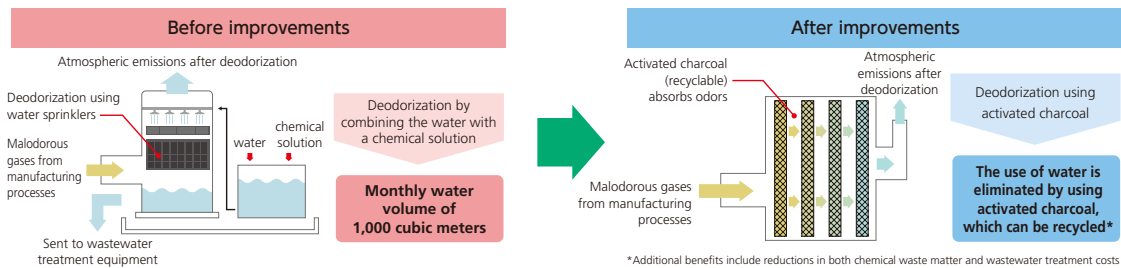
Water is essential to the manufacturing of trucks and buses. To make effective use of precious water resources, Hino Motors has established the Hino Environmental Challenge 2050, its long-term environmental vision, and is working to reduce water usage every day. Hino will continue to work on water-saving activities with the aim of fulfilling the Challenge of Minimizing and Optimizing Water Usage.

Major Initiatives

- Eradication of wasteful use with a water-saving patrol (leakage/overflow [effluent])
- Water-saving educational activities (using posters and other materials to communicate)
- Effective use of rainwater and wastewater treatment plant's treated water

Example | Reducing water usage by phasing out chemical solution-based deodorization equipment

At its metal casting production facilities, Hino Motors had been eliminating odors contained in malodorous gases from manufacturing processes by using a method of combining water and a chemical solution. As a new initiative, the Company reduced the amount of water and chemicals its uses by switching to a deodorization method using activated charcoal, which can be recycled.



Example | Effective Use of Domestic Wastewater

At the machining facility of PT. Hino Motors Manufacturing Indonesia, drainage water used in a prayer room (mosque) inside the factory is first stored in a tank and then reused as irrigation water for greenery.

