

Corporate Information

Company Name Hino Motors, Ltd.

Business Lines Trucks and buses, commercial vehicles and passenger cars produced for Toyota Motor Corporation, automotive and industrial diesel engines, vehicle parts, others

Headquarters 1-1 Hinodai 3-chome, Hino-shi, Tokyo

Founded August 1, 1910

Established May 1, 1942

Paid-in Capital 72,717 million yen*1

Number of Employees*1

32,719

Net Sales*2

1,838,000 million yen

Operating Income*2

80,300 million yen

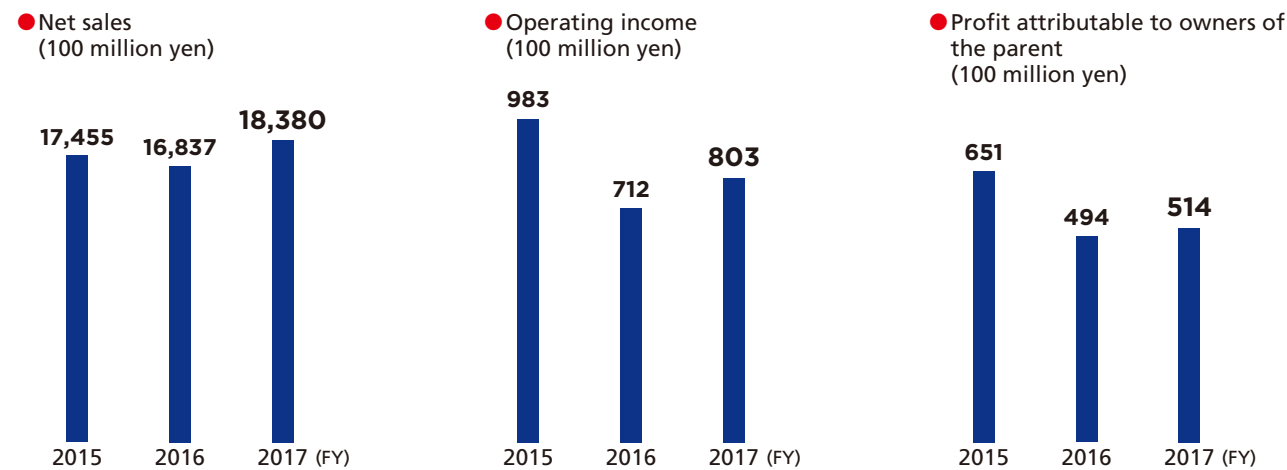
Profit attributable to owners of the parent*2

51,400 million yen

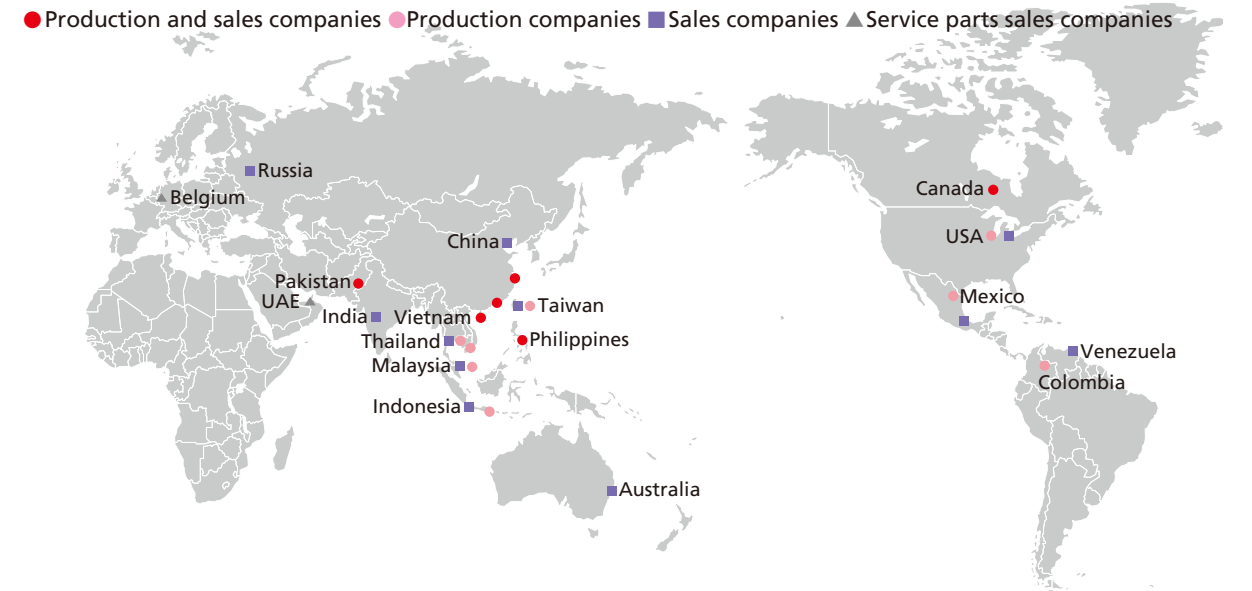
*1 As of March 31, 2018 (consolidated)

*2 Fiscal Year ended March 31, 2018 (consolidated)

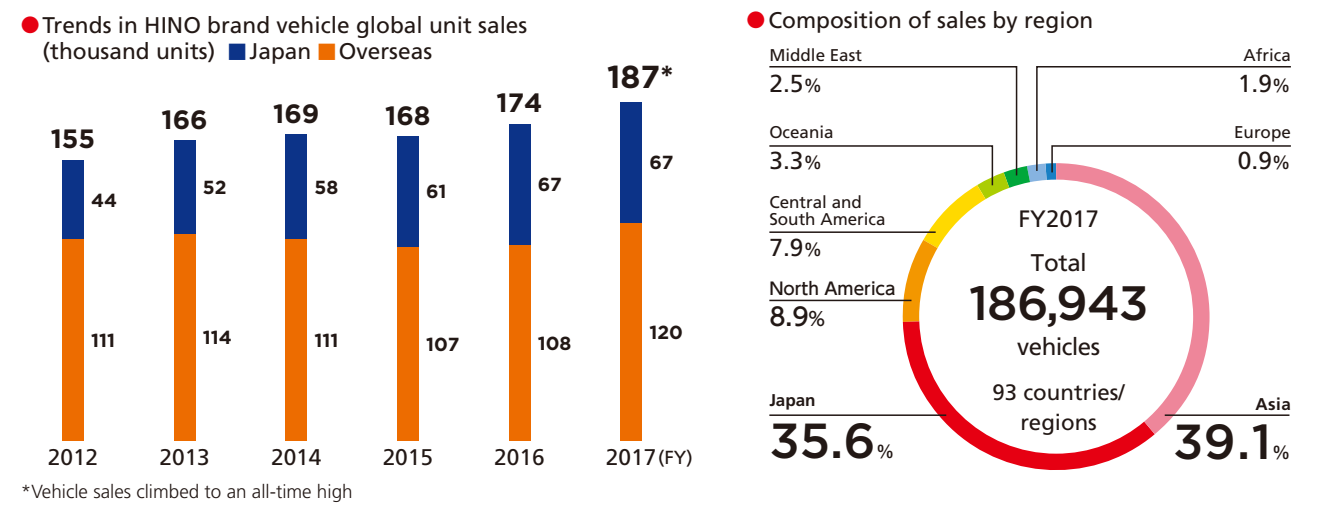
Trends in business results



Overseas Business Entities (companies in which Hino has an investment) As of June 2018



Trends in vehicle global unit sales /Composition of sales by region



CONTENTS

4. History of Hino Motors

6. Top Interview

10. The HINO Credo & Course of Action

10. The HINO Credo

11. The Course of Action: One Slogan and Three Goals

- Best-fit products incorporating safety and environmental technologies
- Total Support customized for each vehicle
- New Activity Areas

18. CSR Management

18. HINO Motors Group CSR

20. SDG Contribution

21. Special Feature

21. Working with Customers to Revitalize Communities
Sharing in the Joys of Life on Minami Daito Island

24. Measures to Support Regional Distribution and Logistics
Origins of "Total Support"

27. ESG Initiatives

28. Environment

28. Environmental Management

35. Material Balance

36. Hino Environmental Challenge 2050

65. Key Performance Data

66. Social

66. Safety

72. Health

76. Quality

80. Human Resources "Creation" and Work Styles

92. Supply Chain

94. Social Responsibility Initiatives

98. Governance

98. Corporate Governance

101. Interview with Outside Director

103. Compliance and Risk Management

106. ESG data and others

106. ESG data

107. GRI Standard Content Index

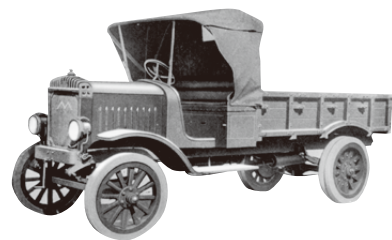
124. ISO 26000 Reference

125. Editorial Policy

126. Third-Party Review

HISTORY of Hino Motors

In 1917, Hino Motors successfully test produced Japan's first 100% domestically designed and manufactured truck, applying its technology to help promote the movement of people and goods. After World War II, Hino Motors supported Japan's reconstruction with trailer trucks equipped with diesel engines. The Company went on to develop the trucks and buses that were responsible for mass transportation during Japan's period of high economic growth. In more recent years, Hino Motors has taken on social challenges related to the movement of people and goods by leveraging cutting-edge technologies including AI and IoT. Today, Hino Motors is embracing the new challenges of a period of revolutionary change the likes of which is seen only once a century.



● **TGE Model A Truck (1917)**
Japan's first 100% domestically produced truck was the starting point for Hino Motors.



● **T10 and T20 Model Trailer Trucks (1946)**
This 100% domestically produced heavy-duty trucks inspired and encouraged the people of Japan in the aftermath of the war.



● **Contessa 1300 Deluxe (1964)**
The Contessa 1300 Deluxe was designed as a world car and exhibited at the 11th Tokyo Motor Show. It received rave reviews from around the globe for its high performance and design.



● **Super Dolphin Series (Dolphin Turbo 8.8)(1981)**
This marked the birth of a powerful low-emission vehicle loaded with new ideas and technologies, including the world's first downsized engine using a curved impeller and turbo compressor.



● **HINO600**
Developed the common bonnet-type truck for the North American market. It was subsequently named the 2011 Truck of the Year (in the medium-duty category) by American Truck Dealers.



● **Hino Dutro Hybrid**
Addressing the world's increasingly severe environmental challenges, in 2003 Hino Motors developed the Dutro light-duty truck, which is equipped with a hybrid system. It has since become and remains the flagship model among Hino Motors' hybrid vehicles.



● **HIMR (1989)**
HIMR was the world's first hybrid bus, and was unveiled at the 28th Tokyo Motor Show. It was commercially launched in 1991.



● **Hino Poncho**
Featuring a low floor that makes it easy to get on and off, which is ideal for community buses, it won the 2006 Good Design Award.



● **Hino Profia & Hino Ranger**
In 2017, the Hino Profia heavy-duty truck was fully remodeled for the first time in 14 years and the Hino Ranger for the first time in 16 years. In addition to improved safety features and fuel efficiency performance, the new models offer superior riding comfort.



● **Hino S'elega**
As the next-generation heavy-duty tourist bus offering significantly improved safety features that came standard with an Emergency Driving Stop System (EDSS), a world first for a truck or bus, the Hino S'elega underwent a minor model change in 2018.

1910s

From Gas Lamps to Auto Industry

The history of Hino Motors began with the establishment of Tokyo Gas Industry Co., Ltd. in 1910. At the time, the gas business was a symbol of modernization, but the Company entered the auto industry, looking further ahead to a new era.



1940s

Diesel Engine Trucks Contribute to Post-War Recovery

Utilizing diesel engine technology developed during the war, Hino Motors developed large-scale trailer trucks.

1950s

Laying Foundations as a Comprehensive Automaker

This marked the beginning of the high-growth period. Riding an economic wave, automakers continued to increase production, and full-fledged motorization began.

1960s

The Challenge of Motorization

In 1966, Hino Motors began a partnership with Toyota Motor Corporation. While production of Hino Motors' passenger cars will be discontinued, production of the Toyota HILUX commences at the Hamura Plant, laying the foundation for the Toyota-Hino alliance.



1970s

Hino Motors Becomes the Top Truck Manufacturer by Refining Technologies in an Era of Emissions Regulations

Diesel vehicle exhaust emissions regulations began the following year in 1974, when Hino Motors became Japan's heavy- and medium-duty truck market share leader. With regulations gradually becoming stricter, the engineering team continued working hard to pass standards.

1980s

World's First Hybrid Bus

In the 1980s, automakers competed for various technologies. Hino Motors' engineering team reached new heights of success with a proprietary environmental technology, thereby pioneering the subsequent hybrid era.



1990s

From Hino of Japan to Hino of the World

On the occasion of the company's 50th anniversary, Hino revamped its corporate philosophy and logo mark. With the strong yen forcing companies to relocate overseas, Hino Motors focused on building a global system.



2000s

A Member of the Toyota Group

In 2001, Hino Motors became a wholly owned subsidiary of Toyota Motor Corporation and assumed responsibility for the Toyota Group's bus and truck business under the HINO brand. In 2007, overseas sales volume exceeded domestic sales volume for the first time.



2010s

A New Challenge as a Truly Global Company

Amid tougher global environmental regulations, the EV shift accelerated. With the advancement of ICT technology, expectations for connected cars and autonomous driving grew, and the automotive industry faced a major turning point the likes of which is seen only once a century.



Our challenge goes on

1914	1923	1929	1939	1945	1947	1951	1954	1958	1963	1964	1969	1970	1971	1972
Outbreak of World War I	Great Kanto Earthquake	Great Depression	Outbreak of World War II	End of the war	Enforcement of the Constitution of Japan	San Francisco Peace Conference	1st Tokyo Motor Show	Tokyo Tower opens	Creation of Japan's first super highway, the Meishin Expressway	Tokyo Olympics	Tomei Expressway opens	Osaka Expo	Nixon shock	The reversion of Okinawa to Japan

1985	1986	1989	1991	1993	1995	2001	2005	2008	2011	2012	2016
Plaza Accord	Enforcement of the Equal Employment Opportunity Act for Men and Women	Fall of the Berlin Wall	Collapse of the bubble economy	Birth of the EU	Kobe Earthquake	World Trade Center terror attack	Exposition of Global Harmony (World Exposition) Held in Aichi, Japan	Lehman Brothers' collapse	Great East Japan Earthquake	Tokyo Sky Tree opens	Hokkaido Shinkansen goes into operation



● **1942**
Company split and establishment of Hino Heavy Industry Co., Ltd. Photo shows a Hino factory at the end of World War II.



● **1953**
Partnership with Renault S. A. Hino Motors formed a technical tie-up with Renault and produced the Renault 4CV compact passenger car (1953-1961).



● **1966**
Partnership with Toyota Motor Corporation Hino Motors, Ltd. and Hino Motor Sales, Ltd. (now Toyota Motor Corporation) created a business alliance.



● **1997**
Dakar Rally Hino Motors participated in its first Dakar Rally in 1991. In 1997, it swept 1st, 2nd, and 3rd places, proving to the world that its vehicles' can perform in harsh environments. 2018 marked Hino's 27th consecutive appearance.



● **2017**
Koga Plant With the aim of building a global production system, Hino Motors reorganized this domestic plant, turning it into its largest and most advanced plant. Koga Plant began full-scale operation in 2017 as the mother plant for medium- and heavy-duty vehicle production.



● **2018**
Partnership with Volkswagen Truck & Bus Hino Motors reached an agreement with Volkswagen Truck & Bus (now TRATON GROUP) to build a strategic cooperative relationship.