

Corporate Information	Top Message	The HINO Credo & Course of Action	Realizing a Sustainable World	Environmental Management	Hino's Strategies and Initiatives and the Sustainable Development Goals (SDGs)	CSR Management	Topic	ESG Initiatives			
								Environment	Social	Governance	ESG data and others

Environmental Initiative Plan (5-year action plan) 2020 Environment Initiative Plan 2025 Environmental Initiative Plan
 Six Challenges (Initiatives) Compliance Environmental Management Various Environmental Data Other Activities



CHALLENGE! 6 Challenge of Minimizing the Impact on Biodiversity

Considerations toward Biodiversity

Protection

Hino Motors has endorsed the Japan Business Federation's Declaration on Biodiversity, and after having also incorporated individual targets into the Company's five-year Environment Initiative Plan, in fiscal 2015 the Hino Motors Biodiversity Guidelines were formulated and the direction for Company activities and specific initiatives on biodiversity were set out and are now being advanced.

Going forward, the Company will promote various initiatives in consideration of biodiversity in accordance with the Biodiversity Guidelines in order to ensure coexistence with the ecosystems around Hino Motors and to continue to grow as a company. At the same time, Hino Motors plans to actively incorporate participation-based activities for employees as a means of tackling the issue of raising awareness and environmental consciousness among employees.

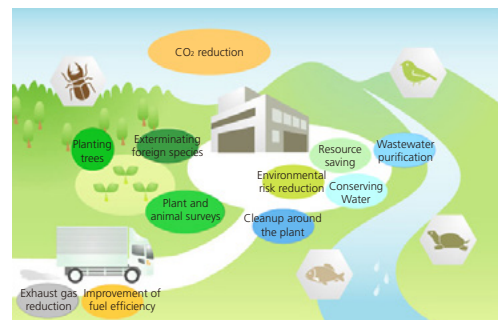
Biodiversity Initiatives

- Further pursuit of environmental technologies in products
- Consideration for regional water resources
- Contribution to biodiversity through steady promotion of environmental initiatives (CO₂ reduction, resource conservation, etc.)
- Collaboration and cooperation with communities
- Active information disclosure

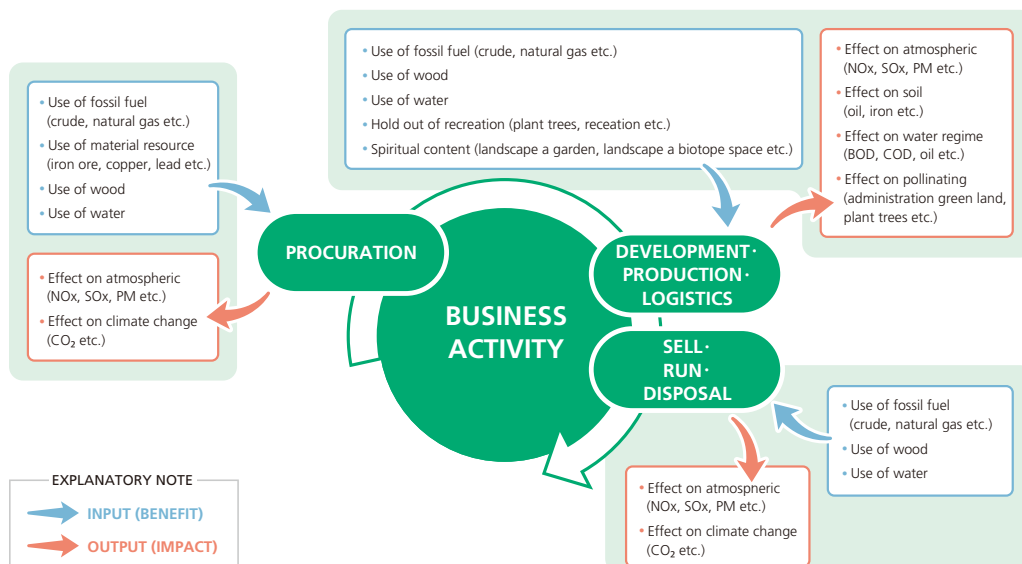
Categorizing the Interrelationship of Business Activities and Biodiversity

Protection

Referring to the Business & Biodiversity Interrelationship Map (see diagram below) devised by the Japan Business Initiative for Biodiversity (JBIB), Hino Motors has categorized benefits and impacts at each stage of the product life cycle. In this way, in the course of its business activities, Hino Motors simultaneously benefits from and impacts nature in the product life cycle as a whole. Hino Motors recognizes that every action counts, no matter how small. The Company is committed to reducing its environmental impact on biodiversity and ensuring that its business does not adversely affect surrounding ecosystems.



● Business & Biodiversity Interrelationship Map



Corporate Information	Top Message	The HINO Credo & Course of Action	Realizing a Sustainable World	Environmental Management	Hino's Strategies and Initiatives and the Sustainable Development Goals (SDGs)	CSR Management	Topic	ESG Initiatives			
								Environment	Social	Governance	ESG data and others

Environmental Initiative Plan (5-year action plan) 2020 Environment Initiative Plan 2025 Environmental Initiative Plan
[Six Challenges \(Initiatives\)](#) Compliance Environmental Management Various Environmental Data Other Activities

Examples of Initiatives Protection

The event was not held in fiscal 2020 to prevent the spread of COVID-19, but initiatives implemented to date are introduced here.

◆ **Biodiversity public awareness and education activities**

Hino's headquarters and plants collaborated with Hino City's Kingfisher House to familiarize people with the creatures that inhabit the area by holding exhibits of stuffed birds and reptiles living nearby, as well as displaying insect and plant specimens.

In addition, the Hamura Plant invited an instructor from the Hamura City Environmental Conservation Division, who presented local strategies for protecting the city's precious living creatures and local initiatives from a biodiversity perspective.

To ensure the future spread of these activities, we will continue exchanges with the government and expand them to other business offices.



Exhibition (Hino Plant)



Presentation of Hamura City's initiatives (Hamura Plant)

◆ **Participation in local conservation activities**

In Commemoration of the 70th anniversary of Hino Motor's founding, we mowed the undergrowth to help the planted trees grow and held an observation session with the children. In the Tachikawa Cliff Line (Total length of about 40 km) designated by the TOKYO Metropolitan Government, we carried on tree planting, green road maintenance, etc. with Hamura city and citizen groups at Inari Green Space area near the Hamura Plant. We are engaged in green conservation activities as a habitat for various creatures in order to protect the precious nature left in Tokyo.



Inari Green Space Area activities



Mowing activities

Corporate Information	Top Message	The HINO Credo & Course of Action	Realizing a Sustainable World	Environmental Management	Hino's Strategies and Initiatives and the Sustainable Development Goals (SDGs)	CSR Management	Topic	ESG Initiatives			
								Environment	Social	Governance	ESG data and others

Environmental Initiative Plan (5-year action plan) 2020 Environment Initiative Plan 2025 Environmental Initiative Plan
[Six Challenges \(Initiatives\)](#) Compliance Environmental Management Various Environmental Data Other Activities

Examples of Initiatives

◆ Holding of environmental study classes for a neighborhood elementary school

At the Koga Plant, employees planted aquatic plants and conducted biological surveys with neighboring elementary school students in the retention basin that directly connects to the nearby river.

We explained that many indigenous species have been identified this year and are surrounded by a rich ecosystem. The class also served to reaffirm that we must not forget to consider the surrounding ecosystem amid our ongoing business activities.



Retention basin survey

◆ Cleanup Events in Areas Surrounding Business Sites

Cleanup events are held in areas surrounding business sites including the Hino Plant, Hamura Plant, and Nitta Plant, as well as at group companies both in and outside of Japan, contributing to communities, raising environmental awareness and commuting etiquette.



Ome Parts Center



Hinopak Motors, Ltd.